

SCHOOL GROUPS & SUMMER CAMPS

JUNIOR STUDENTS AGED 10 - 17 YEARS

BOURNEMOUTH, UK



Course Length
7 - 28 nights



Dates
June, July, August

2026



Introduction

Kingfisher Education is a school groups specialist that provides a variety of uniquely designed programmes for young learners. Our programmes include sports camps, mini-stay programmes, international summer camps, as well as the prestigious Global Leaders Championship, hosted at Bryanston School. We pride ourselves on delivering exceptional value and a truly international experience. In 2025, we welcomed over 800 students from 31 different nationalities to our camps.

Our Ethos

Our ethos is centered around educating young learners through a distinctive and modern study curriculum that enables the development of their individual thoughts, values, and life skills. By incorporating a diverse array of educational activities into our study programs, we strive to enhance our students overall learning experience.

What makes us unique?

Our residential camps offer young learners an enriching experience that combines English language lessons with life skills, public speaking, business and leadership workshops.

Our camp locations have been carefully selected based on a unique criteria and decades of industry experience. We exclusively partner with schools that are familiar to us, which includes institutions attended by family members and schools where we have previously worked. This approach ensures a thorough understanding of the facilities and environment that our students will encounter.

Our priorities are driven by our experiences and we pride ourselves on a number of factors; personal relationships with our overseas schools and agents, fewer students, attention to detail, caring and experienced staff, a safe and nurturing environment and most importantly ensuring that every student feels supported and secure.



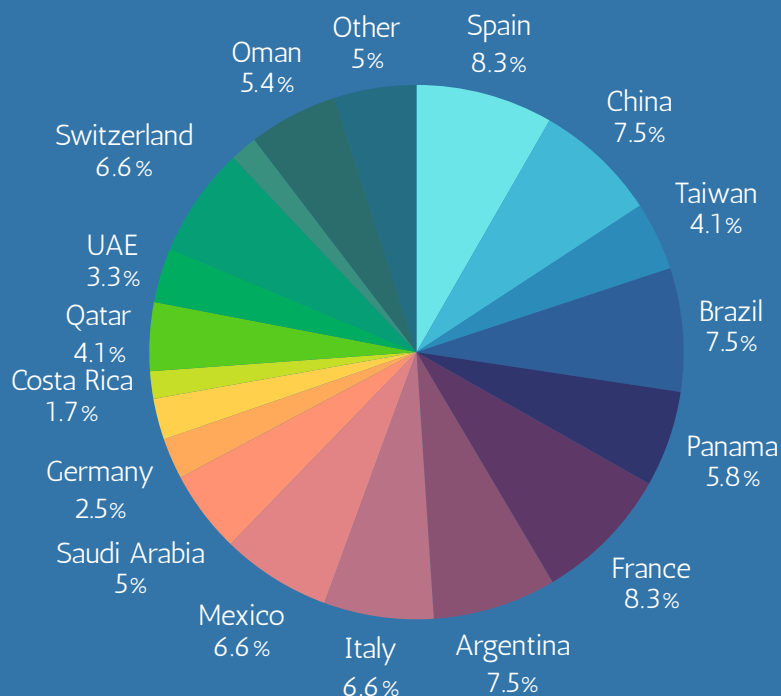
"We believe learning should continue outside of the classroom."



Our Junior Programmes

Courses and Contents

Our Schools - Bryanston School, Dorset	Page 5
Our Schools - ETC International College, Bournemouth	Page 6
Our Schools - Westbourne Academy, Bournemouth	Page 7
Our Courses - Applied English	Page 8
Our Courses - Business English	Page 9
Our Courses - General English	Page 10
Our Courses - Teacher Training	Page 11
Global Leaders Championship - Bryanston School, Dorset	Page 12
Mini-Stay Programmes - ETC & Westbourne Academy, Bournemouth	Page 13
What's Included - Summer Camps and Mini-Stays	Page 14
Timetable - Activities and Excursions	Page 15
Soccer Camps - Bournemouth, Dorset	Page 16
Rugby & Netball Perform Better Camps - Apex2100 - Tignes, France	Page 17
Tennis & English or Spanish - Rafa Nadal Academy - Mallorca, Spain	Page 19
Accommodation options - Homestay, Residential, Beach & Boarding Schools	Page 20
Meet the Team - Profiles of the Senior Leadership Team	Page 24



Top 10 Nationalities:

Spain
Italy
China
Switzerland
Brazil
France
Argentina
Panama
Mexico
Oman



Our priority is to provide a safe and supportive environment

Whether it is your child's first experience away or they've made it a summer tradition, our Junior Programme provides a well-rounded combination of enjoyable activities, educational opportunities, and cultural immersion. We recognise that sending your child to another country can be daunting; therefore, we are committed to ensuring they feel comfortable and parents are updated on their progress. Our foremost priority is to provide a safe and nurturing environment, ensuring that every student feels supported and secure. Our junior students quickly integrate, cultivating lasting friendships, and creating memories that will last a lifetime.



Testimonials



"Absolutely brilliant experience. Learning is a never-ending journey with Kingfisher Education. We can't thank you enough for keeping our students so entertained and busy during their stay".



"We want to thank you again and tell you that this was one of the best experiences we've ever had with linguistic stages. 5 stars!"



"A huge thank you for your support and guidance. Our students had so much fun and such a positive learning experience. It was fantastic to be surrounded by other students of a similar age and level."



Our Summer Schools

Bryanston School

Accredited by the Boarding Schools' Association

Bryanston School is a public school located next to the village of Bryanston, and near the town of Blandford Forum, in Dorset in South West England. It was founded in 1928.

The school's ethos is centered on fostering a forward-thinking and open-minded environment, blending traditional values with a modern, innovative approach to education. The school emphasizes individual spirit, creativity, and "unbounded thinking".

The school is set in more than 400 acres of beautiful Dorset countryside - a happy, creative and forward-thinking place to learn.

Facilities

Bryanston School boasts a purpose-built sports centre on campus, along with many sports facilities and pitches around the site, including a full size astro pitch (hockey), 8 x tennis courts, several rugby pitches and athletics facilities.

- 600 seat theatre
- Music recording studio
- Sports Centre with a fully equipped gym
- Swimming pool
- Equestrian Centre
- 400 acres of outdoor space
- Forest School



Age range 13-17 years of age



Boarding Houses - On Campus
Bournemouth - 45 mins drive
Salisbury - 45 mins drive



ETC International College

Accredited by the British Council

ETC International College is one of the leading international schools in the UK. Since its establishment in 1989, the institution has welcomed international students of all ages. The teachers are well-known for their exceptional classroom management skills and expertise in teaching methodologies. The spacious reception area is staffed by experienced personnel, and the influx of Kingfisher junior groups throughout the year contributes significantly to the cosmopolitan atmosphere.

Facilities

- 40+ Classrooms all with interactive whiteboards
- Multimedia learning centre
- Large engineering laboratory
- Computer room
- Free wireless internet access
- Modern campus with secluded external space for students to relax
- Prayer room
- Key code entry system
- Library and a stationary shop
- Two large caf terias with a food hygiene rating of 5 out of 5. (very good).
- Table Tennis and Table Football
- Large outdoor terrace seating



Age range 10-17 years of age



Park Residence - 8 mins walk
Town Residence -12 mins bus
Beach & Town Centre - 6 mins walk



Westbourne Academy

Accredited by the British Council

Westbourne Academy is situated in a beautiful location, close to our Kingfisher Park residence and other our Bournemouth School. This means we can split large groups easily between locations. We selected Westbourne for it's commitment to providing a personalised service, and the smaller campus ensures greater interaction among students. The busy cafe and outdoor area acts as a hub for the school and it's proximity to Westbourne is ideal for visiting group leaders.

Facilities

- Over 20 classrooms, many with Interactive Boards
- Free WiFi
- Free course materials
- Free online materials for students
- 24-hour emergency support
- On-site coffee shop
- Table Tennis & Table Football
- Attractive private garden area
- Student study room
- Listening centre for self -study
- Library
- Computer room



Age range 10-17 years of age



Park Residence - 12 mins walk
Town Residence -12 mins bus
Beach & Town Centre - 8 mins walk



Our Courses

Applied English

Our aim is to inspire and empower the next generation and we do this by offering something different to the traditional general english courses. Our two week residential programmes offer young learners an enriching experience that combines life skills, public speaking, business and leadership lessons with beach and forest school sessions to give our students a more well-rounded education.



Ages

14-17 years



Campus

Bournemouth
Schools



Dates

July only



English Level

Minimum B1 +

A Unique Way Of Learning

Business

From budgets to business cards, our exploration into the world of business and finance paves the way for our young learners to become future entrepreneurs. Students have the opportunity to work in small teams and pitch their business plan to a panel of judges.

Public Speaking

All students, no matter their age, should be given the confidence and skills to comfortably speak in public. Our workshops help develop key communication skills and our guest speaker provides the perfect example for them.

Leadership

Our leadership classes are tailored for students eager to understand the challenges facing our world today. It focuses on cultivating leadership qualities, enhancing cultural intelligence, and gaining a deep insight into global issues. All essential skills for those aiming to lead on the international stage.

Sustainability

Students have the opportunity to attend both Beach school and Forest schools sessions where they get to learn outside on location about sustainability and how the next generation can protect the oceans and the land. Our ocean film festival evening complements this workshop perfectly.

Our Courses

Business English

Our two-week Business course for young entrepreneurs fully engages students in the core aspects of business strategy, financial literacy, and leadership. Tailored for those keen on grasping the fundamentals of business, this program offers practical learning experiences where students delve into the real-world applications of economics, marketing, and strategic planning.



Ages

14-17 years



Campus

Bournemouth
Schools



Dates

July only



English Level

Minimum B1 +

Inspiring Tomorrow's Entrepreneurs

Business Course

Our Business course offers an immersive experience in the fundamentals of business strategy, financial literacy, and organizational leadership. Tailored for students who aspire to comprehend the core principles of business, this program emphasizes hands-on learning opportunities. Students will engage with real-world applications across economics, marketing, and strategic planning, enhancing their practical understanding of these critical areas.

Market Dynamics

The course focuses on hands-on, scenario-based learning, providing students with a comprehensive understanding of how businesses function and evolve in a fast-paced global landscape. You will explore key subjects such as market dynamics, branding, and financial management, all while honing the critical thinking skills necessary for making informed choices. Through engaging simulations, case studies, and entrepreneurial projects, students can apply theoretical concepts in real-world environments.

Our Courses

General English

Our General English language lessons are delivered by schools accredited by the British Council, while we manage all other aspects of the program. The courses are structured according to the Common European Framework of Reference for Languages (CEFR) levels, allowing you to clearly understand the learning objectives throughout the course while ensuring that your certification is recognised globally.



Ages

10-17 years



Campus

Bournemouth and
London



Dates

All year round



English Level

A1-C2

Standard English Course

General English program is designed to enhance English language and communication skills, instilling confidence and enabling students to navigate everyday situations effectively. Utilising a communicative approach, students will practice listening, speaking, reading, and writing skills.

Duration

English lessons are 08.45am - 12.15pm, from Monday to Friday with any catch-up lessons on Friday afternoon.

Levels

Each student's language proficiency is assessed on their first day. Students are then placed into classes based on their age and ability.

Number of Lessons

15 hours of English each week, three hours of lessons each day in mixed nationality classes.

Class size

English language classes are limited to a maximum of 16 students per class and when it is possible we try to create smaller classes of approx 12 students.

Monitoring Progress

Parents can request weekly attendance and performance reports from our friendly Academic Manager.

Our Courses

Teacher Training

Our 1 and 2 week Teacher Training course are designed for international English teachers who are already qualified but who would like to improve their teaching knowledge, classroom practices and build confidence, so they can further progress their career.



Ages

Adults 18+



Campus

Bournemouth



Dates

All year round



English Level

Minimum B2 +

Revitalise Your Teaching Methods

Brief Summary

This course is designed to revitalize classroom practices and enhance language skills while equipping teachers with the tools and strategies necessary to foster creativity. Teachers will acquire innovative ideas and learn to adapt English lessons in creative ways, as well as nurture their students' creativity. Teachers will enhance their English language proficiency and intercultural awareness within a supportive and friendly international environment.

Speaking & Listening

Teachers will improve their speaking and listening skills, broaden their vocabulary, improve language accuracy, and become more confident English speakers. Furthermore, teachers will acquire valuable new ideas for activities and tasks to implement in their own classrooms. Teachers will acquire an understanding of the principles underlying effective instruction in students' second languages, which will enhance your ability to design English-medium materials and evaluate your students within an English-medium framework.



GLOBAL LEADERS CHAMPIONSHIP

The Global Leaders Championship (GLC) for international and bilingual Schools is a pioneering competition that seamlessly blends the charm of a historical British campus with cutting-edge VR technology, advanced business acumen, boundless creativity, and deep cultural pride. GLC inspires and equips the next generation of global leaders with a broad range of competencies that are in demand globally.



Ages

13-17 years



Campus

Bryanston School



Dates

29 March - 12 April



English Level

Minimum B2 +

4 Core Team Competitions

Business Mastermind

Students tackle real-world business challenges, creating pitch decks in English. With guidance from an MBA Business Coach, they brainstorm, research, and refine strategies, presenting to hedge fund and finance executives in London's financial district.

StarStage Quest

Students explore peace and security through a collaborative drama project inspired by Shakespeare's *Romeo & Juliet*. From scriptwriting to performance, they examine global issues, drawing parallels to Shakespeare's themes.

Virtual Gallery Showcase

Students use the latest VR headsets to create virtual galleries celebrating their school, community, and cultural heritage. They will showcase their school's ethos and local culture through various media formats, using Meta and Spatial's Creators Toolkit.

Global Unity Debate

Students engage in a dynamic Model United Nations simulation, experiencing international diplomacy through virtual reality crisis scenarios, bloc formation, and debates. They negotiate resolutions and sharpen persuasive arguments.



Mini Stays

What's included in our Mini Stay programmes:

- Host family or Residential accommodation
- Dates available all year around
- English language courses with educational-focused activities
- Mixed nationalities including English students on some excursions
- Optional recreational programme in the afternoon and evenings
- Single and shared room accommodation options
- Full day and Half day excursions optional
- Variety of hot and healthy meals and packed lunches at weekends
- Fully trained and experienced staff
- Return Airport Transfers from most UK airports
- Group leader single room accommodation



Ages

10-17



Campus

ETC College &
Westbourne Academy



Dates

Sept- May



English Level

All Levels

Activities

An example of some of the more budget-friendly activities that mini-stay groups prefer to choose from:

- Sightseeing Tour
- Museum visit
- Beach BBQ
- Beach Bike rides
- Beach or Park Sports
- Laser Games
- AquaPark
- Beach and Forest School
- Bowling & Mini-golf
- Swimming at the residence

Excursions

We can offer any of the following excursions and a whole lot more depending on your group's requirements.

- Hengistbury Head
- Christchurch
- New Forest and surround areas
- Weymouth Sealife Centre
- Jurassic Coast with guided walk
- Southampton with entry to the Titanic Museum
- Winchester or Salisbury with guided walking tour
- Oxford with entry to Science Museum
- Bath with guided walking tour
- Brighton with guided walking tour
- London – 1-day excursion
- London Full Weekend



Please see our Mini-stays for Schools Brochure for more information and prices.

What's Included?



Airport Transfers

From Heathrow & Gatwick Airports

We pick our students up from the airport and take them straight to their Homestay or Residence.



Accommodation

Host Family or Residence

Students can choose to stay in one of our premium homestays or residences during their stay.



Courses

20 Lessons per week

Students study 15 hours of General English. Lessons take place in the mornings with activities in the afternoon.



Excursions

Full day & Half day Excursions

We offer our students a variety of half and full day excursions which ensures the learning continues outside of the classroom.



Activities

Educational and fun-filled activities

Our experienced activity staff are always available to help both students and group leaders.



Full Board

Breakfast, Lunch & Dinner

Hot meals are included as part of the programme with packed lunches provided for excursion days.



Student Support

Stationary and more

All course materials, online tests, excursion packs, travel cards and end of course certificates are provided.



Weekend in London

Exploring London

Students will be able to enjoy multiple excursions including a weekend in London.



Certificates

Certificate ceremony

At the end of their course our students will be awarded with their own certificate to take home.





We are committed to maximising every moment for our students, which is why we offer a dynamic and action-packed program of activities and excursions, complemented by educational lessons on vital topics such as leadership, business, and public speaking.

Students fully immerse themselves in our engaging timetable, thoughtfully crafted to provide both variety and enjoyment throughout their experience.



EXAMPLE

JUNIOR PROGRAMME

WEEKLY TIMETABLE

08.45 - 9.30	Lesson 1
09.30 - 10.15	Lesson 2
10.15 - 10.40	Break
10.40 - 11.25	Lesson 3
11.25 - 12.10	Lesson 4
12.10 - 13.15	Lunch
13.15 - 17.00	Activities

WEEKEND TIMES - 08.30 - 18.30



SATURDAY

LONDON - sightseeing tour with our experienced tour guide and visits to Covent Garden, Piccadilly and Leicester Square.



SUNDAY

OXFORD - sightseeing tour with our experienced tour guides and visits to Oxford University, Carfax Tower and Museums.

KINGFISHER

EDUCATION GROUP

EVENING ACTIVITIES

Monday : Welcome meeting
Tuesday : Movie night at School
Wednesday : Swim at the Residence
Thursday : Under 18 Disco at Cameo
Friday : BBQ Party at Surf Club
Saturday : Guest Speaker (Everest)
Sunday : Mini Golf or Bowling

MONDAY



Bournemouth
Sightseeing Tour

TUESDAY



Winchester
Excursion

WEDNESDAY



Laser Games at
Laserquest

THURSDAY



Jurassic Coast
Excursion

FRIDAY



Certificate
Presentation



Soccer Camp

Bournemouth, Dorset



From July 12 to July 26
Sunday to Sunday

Soccer level - Beginner to Advanced

- Return airport transfers
- Full board residential accommodation
- 15 hours of General English
- 12 hours per week of professional soccer coaching
- Footy Lab Experience
- Sessions designed to enhance technical ability
- Soccer proficiency certificate
- World class facilities - play on a supersize Artificial Grass Pitch (AGP), complemented by a shock pad installation.
- Two Premier League Stadium tours
- Full Premier League replica kit
- 24/7 residential staff
- Evening activities
- Private minibus each day

Mix & Match: We also offer students the ability to spend 1 week on our soccer camp and one week on our standard summer camp programme with mixed activities.

Meet the Coaches



Tom Symons

UEFA B Certificate in Coaching Football
Degree in coaching & development,
FA level 2 coach



Richard Harrison-Poole

Director of Academy Sport
BSc Hons, QTS





Rugby Perform Better Camp

Tignes, France

Rugby level - Beginner to Advanced

Meet the Coaches

Apex has developed its own Perform Better programme, that teaches athletes practical skills to execute better under pressure, be it on the field of play, in the classroom or more broadly in life.

The Rugby Perform Better camp will include workshops on specific elements, delivered in a netball specific context:

- **SERIOUS FUN:** visual awareness + game play
- **ATHLETIC DEVELOPMENT:** S&C + altitude training
- **BRAIN FITNESS:** mindfulness + coping with pressure
- The Apex experts we will deliver content in a rugby context, but everything your players will learn is directly applicable to a busy school life.

The programme is composed of rugby training, athletic development, Apex Perform Better workshops and a mid-week 'activity' day. Each school benefits from individual pitch time, sessions with each of the other participating schools and a mini tournament can be organised on the final day.



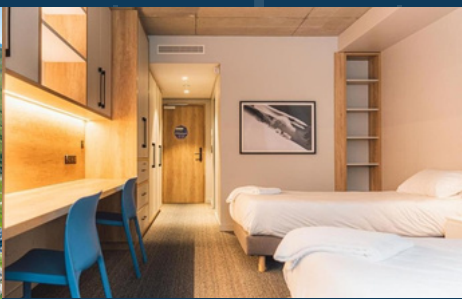
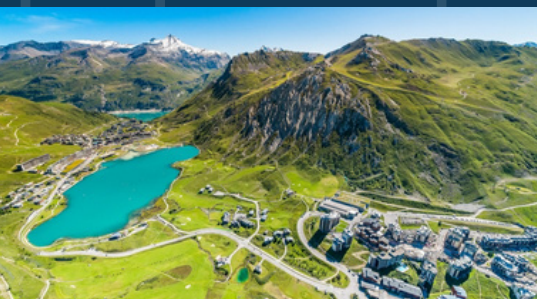
Sir Clive Woodward OBE

Former England World Cup winning rugby coach, He also coached the 2005 British & Irish Lions.



Tom Mitchell

Tom Mitchell is a Silver medalist Olympian and GB rugby 7s captain





What's included in the Programme

- Programme developed by Sir Clive Woodward and Tom Mitchell (with input from all Heads of Rugby)
- 8-10 pitch training sessions (including private transport directly to the pitch)
- 6-nights' accommodation
- Airport transfer from Geneva or Lyon airports
- Full board
- Post training recovery snacks
- Access to the Apex sporting facilities (Techno-Gym, Performance Centre, Movement Studio and Hydrotherapy Centre)
- Access to Apex laundry facilities
- Team room
- Perform Better workshop - Athletic Development strength and conditioning sessions
- Perform Better workshop on Serious Fun – visual awareness and game play
- Perform Better workshop on Brain Fitness – coping with pressure and mindfulness techniques
- Full time medical team onsite
- Professional referee available for key sessions
- My Tignes activity cards (multiple activities)
- Premium activity (white water rafting)
- Free of charge teacher/coach (1 per 8 players)



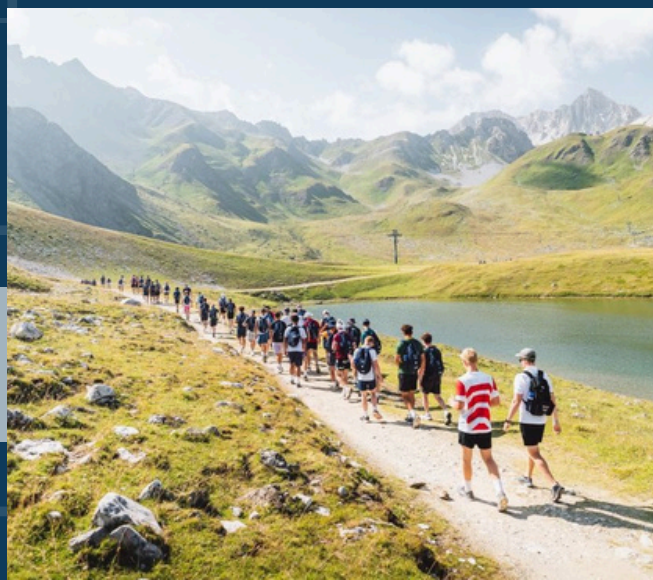
Availability between -
June to August 2026
Sunday to Sunday

Extras

- Post training snacks
- Private bus to pitch
- Apex physio
- Airport transfers
- Tignes activity card
- Acroland
- Rafting
- High ropes
- Planning/logistical support
- Airport Transfers
- Flights



Our friendly staff meet all students at Gatwick Airport and travel as a group to Tignes.





Rafa Nadal Tennis & Languages Mallorca, Spain

Tennis level - Beginner to Advanced

- Return airport transfers
- 12.5 hours of tennis/padel training (Ratio 1:4)
- Tennis competition on Saturdays.
- 8 hours of English or Spanish classes with native teachers.
- 10 hours of sports activities.
- 5 hours of "Building a Champion" activities.
- 8 hours of leisure and recreational activities in Mallorca.
- Guided visit to the Rafa Nadal Museum.
- Barbecue dinner and trophy presentation.
- Lunch and mid-morning snack.
- Welcome package
- 24/7 residential staff
- Evening activities
- 7 nights accommodation in the Academy's supervised residence (check-in and check-out on Sunday).
- Full board
- Medical care, physiotherapy and nutrition services

Meet the Coaches



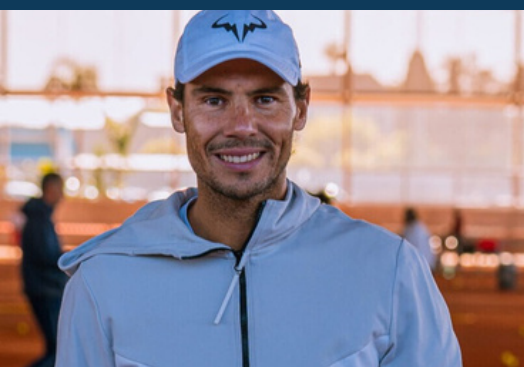
Nacho Gonzalez
Junior Camps Head Coach



Anabel Medina
Junior Camps Women's Coach



From June 30 to August 4
Sunday to Sunday





Town Residence

Single room accommodation

The residence is perfect for young learners (aged 16 and 17) as well as groups who can take separate floors in the main building exclusively for themselves.

All rooms at our Town Residence come with an ensuite private bathroom. The rooms are arranged in cluster flats, which means 6-8 single rooms and a shared lounge/kitchen. We always ensure we have 1 staff member in each flat.

Downstairs there is a spacious common room which our junior student groups can book out for an evening. You'll also find a free pool table, table tennis, and table football, as well as comfy sofas and a TV. There's also an outdoor courtyard for grabbing some fresh air.



Schools - 12 minutes by bus
Town Centre - 12 minutes walk
Beach & Gardens - 10 minutes walk



From July 12 to August 22
Sunday to Sunday

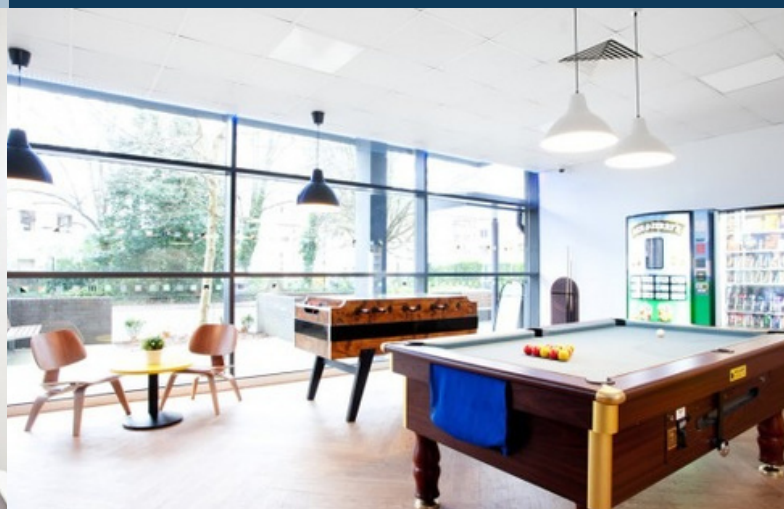
Facilities

- Centrally located in town centre
- Bed linen and towels provided
- 6-8 students per flat with shared lounge and kitchen area
- Games room
- Student lounge
- Free wireless internet
- Single rooms
- Rooms cleaned once a week
- Modern facilities
- 24 hour security and live-in staff

Location

The Town residence is our single-room residence in the heart of the town centre and is most popular with our young learners (aged 16 & 17).

The Town Centre is within an easy 12 minute walk





Park Residence

Shared room accommodation

Our Park residence is situated just 10 minutes walk from the Schools. The residence is perfect for international groups as it is made up of 3 small buildings, which are exclusively used by our junior students and a larger main hotel building.

This off-campus residence provides shared rooms on a par with most British boarding Schools. All rooms are ensuite bathrooms. The residence accommodates up to 60 people in a variety of rooms, including; twins, triples and quads which helps provide a summer camp atmosphere.

The students benefit from the use of several excellent facilities including a swimming pool and games room and a large outdoor sun terrace.



**Available All Year Round
for Junior Groups**

Facilities

- Bed linen and towels provided
- Bed and breakfast provided on site
- Accommodates up to 80 students
- Games room
- Swimming Pool
- Table Tennis
- Free wireless internet
- Shared rooms – twins, triples and quads
- Single rooms for Group leaders
- Rooms cleaned once a week
- 24 hour reception
- Live in Staff

Location

The Park residence is our top choice for mini stays and summer camps, thanks to it's fantastic location.

The Schools, Beaches Town Centre are all within an easy 10 minute walk.

Our live-in activity staff supervise the residence, and the staff walk the students to and from school each day.





Residence location



Individuals - July 2026
Groups - All year round

BEACH HOUSE RESIDENCE

“Where the beach meets home – the perfect summer escape for young adventurers.”

Ideal for both junior individuals and small groups, the beach residence accommodates up to 26 students.

The Beach Residence is our premium bed and breakfast designed exclusively for junior students wanting more comfort and independence than a regular student residence offers. A unique mix between a homestay and a hotel.

It features 10 bedrooms, a spacious terrace with table tennis, and a large lounge where students can relax and mix and socialise in the evenings, all supervised by our live-in staff.



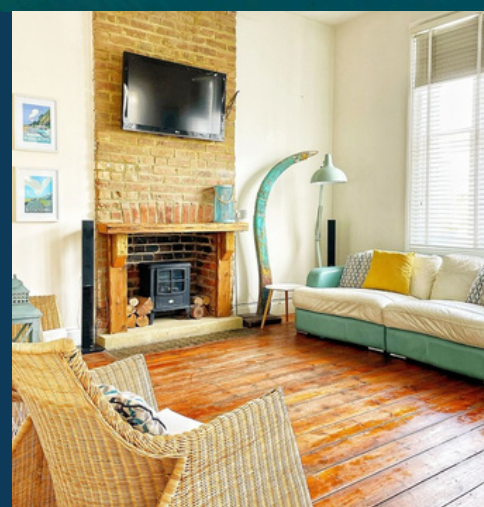
Age range 10-17 years of age

The interior design carries a consistent surf-inspired theme, perfectly complimenting the breathtaking natural beauty of it's stunning beachfront location.



4 minute walk to School
1 minute walk to the Beach
4 minute walk to the Town Centre

For enquiries or to book
Email: schoolgroups@kingfishercamps.com





Homestay Accommodation

For individuals or pre-arranged pairs



**Available All Year Round
for Junior Groups**

Homestay accommodation, commonly known as host family accommodation, provides students with the opportunity to stay with a family during their stay in Bournemouth.

Our families are mainly situated on the outskirts of Bournemouth, particularly in areas such as; Charminster, Southbourne and Westbourne. These neighborhoods are characterised by homestays and provide ideal accommodations for junior students, away from the bustling town center. Most students will need to take a bus to and from school daily. We ensure that only one bus is required for the journey, which typically lasts around 30 to 40 minutes each way.

To enhance comfort and companionship, we ask that students traveling in groups be placed in pre-arranged pairs, ensuring that no one travels alone. We can offer Group leaders single rooms in homestay and there are also triple and quad rooms available on request. Shared rooms generally have a shared bathroom. In a homestay home-cooked meals are provided, allowing students to dine and socialise with the family, enriching their cultural experience.

Build Your Own Programmes

All our mini-stay programmes can also be tailored to our client's requirements.

So whatever your budget, dates, or numbers you can now build your own perfect programme!



Ages

10-17 years



Bournemouth Campus

ETC International College
or Westbourne Academy



Dates

September - May



Accommodation

Residential or
Homestay



Meet the Team



Ross Elliott
Director

It is with great pleasure that I introduce myself as Director of Kingfisher Education Group. My primary objective is to positively impact the lives of our young learners by equipping them with the essential tools for future success.



Melanie Dowler
Academic Manager

Mel offers invaluable expertise in academic management. With over 30 years of teaching experience and a background as a former Head, she possesses a deep understanding of both the academic and safeguarding needs of our young learners.



Richard Harrison Poole
Sports consultant

Richard provides expert guidance on all sporting matters and plays a pivotal role in delivering a diverse and engaging sports program. As the Head of Sport at a prestigious private school, his extensive knowledge in organising student sports events is vital.



John Kay
Academic Manager

John is our course designer and teacher trainer. He is also a published poet and has worked for the British Council and a number of international schools. Our aim is to inspire and empower our students and we do this by offering something different to traditional general english courses.



Anna Zienkovicz
Office Manager

Anna is responsible for overseeing the daily operations of the office, and ensures organisational effectiveness and efficiency. Her creative approach and design skills ensures brochures and social media content is constantly updated.



Paula Milan Jover
Finance Manager

Paula works behind the scenes and constantly tells us all to stop spending money. Having spent 5 years as the financial manager at a leading language school her experience of managing budgets, invoicing and financial forecasting is first class.

“All of our efforts across our campuses are dedicated to the well-being, growth, and success of the young individuals entrusted to our care. Every aspect is intentionally designed to support and nurture them on their crucial journey toward becoming impactful individuals”.

Summer Camps | Mini Stays | Soccer Camps

Telephone: 0044 (0)1202 238892

Email: schoolgroups@kingfishercamps.com

Website: www.kingfishercamps.com

Instagram: [@kingfisher_education_group](https://www.instagram.com/kingfisher_education_group)



Terms & Conditions

Accuracy of Details

We accept bookings on the understanding that the schools provides us with accurate details. At any time during the course we may request to see official documentation (eg. a passport) to confirm a child's age and identity. If proof cannot be provided, or if we discover that significantly inaccurate details have been provided then we reserve the right to remove the child from the course without refund of fees.

The deposit

For all groups we request a non-refundable deposit of GBP 100 per person to secure the booking. This must be paid within 10 days of making the booking: if not, the place will automatically become available to other groups.

The balance

The balance of fees is payable 4 weeks prior to the group arriving. If a booking is made less than 4 weeks before attending, the deposit and balance will be payable within 10 days. If any fees remains unpaid 14 days or more after the payment date on the invoice the place will be cancelled.

Cancellation & withdrawal

There will be no refund of fees if a booking is cancelled within 4 weeks of arrival or if a student fails to attend a course. If we receive notice of cancellation in writing more than 4 weeks prior to the course start date then we will refund some or all of your payment providing we can fill the place. Depending on the reason for cancellation you may be able to reclaim some or all of your losses from your insurers.

Exclusion

We reserve the right to expel a student at any time, without a refund of fees, should we determine that such action is in the students best interest or if the child's behaviour is deemed detrimental to the overall welfare of others. Reasons for exclusion may include - but are not necessarily limited to - bad behaviour; self-harming; the consumption of alcohol or illegal drugs; smoking at school; bullying.

Changes to the programme

Programme details are published in good faith. We reserve the right to make changes to any aspect of the course if necessary including activity programmes and airport transfers.

Insurance

Travel and medical insurance is NOT included in the course fee. All students attending our camps MUST book their own comprehensive travel and medical insurance. Students will not be allowed on the programme without the relevant travel insurance in place. We recommend Guard.me. for comprehensive international student travel insurance. <https://guardme.eu>

Unaccompanied Minors

We recommend that any students aged 10-16 years travelling alone travel as an Unaccompanied Minor on the arrival/departure flight. Kingfisher Education arrange friendly and experienced drivers for all private airport transfers.

To Book

Summer Camps | Mini Stays | Soccer Camps

Telephone: 0044 (0)1202 238892

Email: schoolgroups@kingfishercamps.com

Website: www.kingfishercamps.com

Instagram: [@kingfisher_education_group](https://www.instagram.com/kingfisher_education_group)

KINGFISHER
EDUCATION GROUP
www.kingfishercamps.com